

**VIDEOLINK**™  
INC.

Phone: 416-690-1690 or

1-800-567-8481

Email: [info@videolink.ca](mailto:info@videolink.ca)

Website: [www.videolink.ca](http://www.videolink.ca)

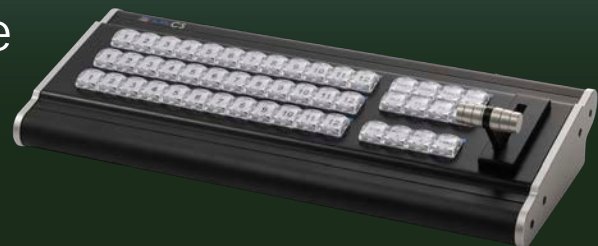
# ACME Control Surface



The Acme Control Surface is the perfect complement to the ACME GO. It brings tactile control to your production by providing a traditional production switcher interface. Using the control surface allows additional personnel to handle titles, graphics, replays and other show tasks while the operator continues to switch the show. Simply plug in and start producing professional live broadcasts.



Brings tactile  
control your  
production



<b>Model</b>	<b>ACME CS</b>
<b>Keys</b>	Professional key switches. Color backlit with Red, Green and Amber LED
<b>Power / Communication</b>	USB -powered via included USB cable
<b>Input Switching</b>	Twelve Program, Preview and Overlay buttons in traditional crosspoint layout for input control
<b>DSK</b>	Four Downstream Keyer buttons to activate Overlays
<b>Transitions</b>	Two transition buttons to control configured transitions including Cut, Fade, Zoom, Wipe, Slide, Fly, CrossZoom, FlyRotate, Cube and CubeZoom. Take button for quick cuts.
<b>T-Bar</b>	Professional quality, smooth motion t-bar for clean transitions
<b>Function Keys</b>	User assignable functions keys for automation through shortcuts
<b>Dimensions</b>	15.4 x 6.75 x 2.6" / 391.16 x 171.45 x 66.04mm
<b>Weight</b>	10.6lbs / 4.81kg

Phone: 416-690-1690 or  
1-800-567-8481  
Email: [info@videolink.ca](mailto:info@videolink.ca)  
Website: [www.videolink.ca](http://www.videolink.ca)

## Acme Portable Machines, Inc.

Contact us to request a quote today!

**VIDEOLINK**™  
INC.

*Video Broadcast Systems / Live Streaming Solutions*

